



**SATCHER HEALTH LEADERSHIP INSTITUTE AND KESSLER FOUNDATION
MEDICAL CANNABIS 65+ AND VULNERABLE COMMUNITIES**

CANNABINOID AND ENDOCANNABINOID RESEARCH SPECTRUM

Roundtable Discussion & Town Hall Community Meeting



Overview & Objectives

PROGRAM OVERVIEW AND OBJECTIVES

The Satcher Health Leadership Institute at Morehouse School of Medicine and the Kessler Foundation will convene a roundtable discussion and town hall meeting on key policy actions and research impacting medical cannabis use in the U.S., and challenges, opportunities and solutions relative to the 65 and older population and vulnerable communities.

The objectives are to:

- 1) Develop consensus on key policy actions and research efforts.
- 2) Convene a roundtable and community town hall meeting comprised of experts and stakeholders that will examine challenges and opportunities for 65 + and vulnerable communities related to medical cannabis.
- 3) Produce a report highlighting recommendations and strategies on advancing access and equity for adults 65 + and vulnerable populations.

Join the Conversation

CONNECTION INFORMATION

Click here to join the *Roundtable Discussion*:

[CLICK HERE TO CONNECT](#)

Meeting ID: 823 7439 1176

Passcode: 825367

Click here to join the *Town Hall Community Meeting*:

[CLICK HERE TO CONNECT](#)

Meeting ID: 830 7010 2943

Passcode: 166097

Do you need to dial in? Dial in by your location:

+1 301 715 8592 (*Germantown*)

+1 312 626 6799 (*Chicago*)

+1 646 558 8656 (*New York*)

+1 253 215 8782 (*Tacoma*)

+1 346 248 7799 (*Houston*)

+1 669 900 9128 (*San Jose*)



Roundtable Agenda

AGENDA — DAY 1

Tuesday, February 2, 2021 – Roundtable Discussion

11:55 AM – 12:00 PM	Virtual Waiting Room	
12:00 PM – 12:15 PM	Opening & Introductions	
	Purpose & Introductions	Maisha Standifer, PhD, MPH Director, Health Policy Satcher Health Leadership Institute Morehouse School of Medicine
	Welcome	Valerie Montgomery Rice, MD President and Dean Morehouse School of Medicine Daniel E. Dawes, JD Executive Director Satcher Health Leadership Institute Morehouse School of Medicine
12:15 PM – 1:15 PM	Research, Medical Cannabis, and Vulnerable Communities	
	Moderator	Vincent C. Bond, PhD Professor and Chair of Microbiology, Biochemistry, and Immunology Morehouse School of Medicine Ziva Cooper, PhD Research Director Cannabis Research Initiative University of California at Los Angeles
		Timothy W. Fong, MD Clinical Professor Cannabis Research Initiative University of California at Los Angeles Juanyce D. Taylor, PhD Chief Diversity and Inclusion Officer University of Mississippi Medical Center
	Questions and Answers	



TUESDAY, FEBRUARY 2, 2021 — Roundtable Discussion *(Continued...)*

1:15 PM – 2:15 PM

Education & Policy on Medical Cannabis and Communities of Color

Moderator

Sara K. Houston, JD

Lead Public Health Attorney
Nebraska Department of Health and Human Services

Rachel Knox, MD, MBA

Co-Founder & Chair, Association for Cannabis Health Equity and Medicine (ACHEM)
Co-Founder & President, CHEM

Stanley Atkins

Chief Executive Officer
The Stanley Group

Jessica F. Gonzalez, JD

Outside General Counsel
Minorities for Medical Marijuana

Questions and Answers

2:20 PM – 2:55 PM

Business, Cannabis, and Under-Resourced Populations

Moderator

James Lillard, PhD, MBA

Associate Dean for Research
Professor
Morehouse School of Medicine

Chanda Macias, PhD, MBA

Chief Executive Officer
Ilera Holistic Healthcare

Mary Pryor

Co-Founder
Cannaclusive

Questions and Answers

2:55 PM – 3:00 PM

Closing Remarks & Town Hall Overview

Maisha Standifer, PhD, MPH



Town Hall Agenda

AGENDA — DAY 2

Wednesday, February 3, 2021 — Town Hall Community Meeting

11:55 AM – 12:00 PM	Virtual Waiting Room	
12:00 PM – 12:15 PM	Opening & Review of Roundtable Discussion	
	Welcome	Valerie Montgomery Rice, MD President and Dean Morehouse School of Medicine
		Daniel E. Dawes, JD Executive Director Satcher Health Leadership Institute Morehouse School of Medicine
	Re-cap of Roundtable, Introductions, Purpose of Event, Framing the Town Hall Convening	Maisha Standifer, PhD, MPH Director, Health Policy Satcher Health Leadership Institute Morehouse School of Medicine
12:15 PM – 1:15 PM	Current Political Landscape in Medical Cannabis Regulations	
	Moderator	Nelson J. Dunlap, JD Public Policy Manager Satcher Health Leadership Institute Morehouse School of Medicine
		The Honorable Barbara Lee U.S. Congresswoman, 13 th District of California
		The Honorable Buddy Carter U.S. Congressman, 1 st District of Georgia
		Joel McElhannon Political Strategist South Public Affairs Consulting
	Questions and Answers	



WEDNESDAY, FEBRUARY 3, 2021 — Town Hall Community Meeting (Continued...)

1:15 PM – 2:15 PM **Town Hall Program Overview: Roundtable Experts & Town Hall Presenters**

	Moderated Q&A	<p>Dasheeda Dawson, MBA Chief Strategist Cannabis Health Equity Movement</p>
--	---------------	---

Research, Medical Cannabis and Vulnerable Communities Presenters

		<p>Ziva Cooper, PhD Research Director Cannabis Research Initiative University of California at Los Angeles</p>
--	--	---

		<p>Timothy W. Fong, MD Clinical Professor Cannabis Research Initiative University of California at Los Angeles</p>
--	--	---

		<p>Juanyce D. Taylor, PhD Chief Diversity and Inclusion Officer University of Mississippi Medical Center</p>
--	--	---

Education & Policy on Medical Cannabis and Communities of Color Presenters

		<p>Rachel Knox, MD, MBA Founder and Chair Association for Cannabis Health Equity and Medicine</p>
--	--	--

		<p>Stanley Atkins Chief Executive Officer The Stanley Group</p>
--	--	--

		<p>Jessica F. Gonzalez, JD Cannabis and IP Attorney General Counsel Minorities for Medical Marijuana</p>
--	--	---

Business, Cannabis and Under-Resourced Populations Presenters

		<p>Chanda Macias, PhD, MBA Chief Executive Officer Ilera Holistic Healthcare</p>
--	--	---

		<p>Mary Pryor Co-Founder Cannaclusive</p>
--	--	--

2:15 PM – 2:45 PM **Community Voices and Medical Cannabis**

		<p>Tabia Henry Akintobi, PhD, MPH Professor, Community Health and Preventive Medicine Associate Dean, Community Engagement Morehouse School of Medicine</p>
--	--	--

2:45 PM – 3:00 PM **Summary and Closing Remarks**

		<p>Maisha Standifer, PhD, MPH</p>
--	--	--

		<p>Daniel E. Dawes, JD</p>
--	--	-----------------------------------

Meet Our Speakers

SPEAKERS AND BIOGRAPHIES

**Tabia Henry Akintobi, PhD, MPH**

Professor, Community Health and Preventive Medicine
Associate Dean, Community Engagement
Morehouse School of Medicine

Tabia Henry Akintobi, PhD, MPH is Professor of Community Health and Preventive Medicine and Associate Dean of Community Engagement at Morehouse School of Medicine in Atlanta Georgia. She is social behavioral scientist with a Master's and Doctoral Degree in Public Health from the University of Miami and University of South Florida, respectively. She is a health equity champion- leading or collaborating in the implementation of translational research and participatory evaluations that address health disparities and advance community or population health transformation. As Principal Investigator of the Centers for Disease Control and Prevention-funded Morehouse School of Medicine Prevention Research Center she demonstrates leadership in local, national and global community-based participatory approaches and research addressing position community and patient groups as *senior* partners in co-creating interventions that are both community relevant, community co-created and scientifically rigorous-- thereby advancing health equity. She leads or collaborates in several federal (CDC, Office of Minority Health, National Institutes of Health) and privately-funded initiatives that model community-driven research, including but not limited to the Georgia Clinical and Translational Science Alliance, The Center for Translational Research in Health Disparities *and* The Georgia Center for Diabetes Translation Research. Her public health leadership is also evident through appointments to state and national taskforces designed to shape the science and practice of effective community-engaged, translational-research that bridged the research collaboration gaps between basic, clinical and community-based stakeholders. Research interests including HIV, maternal/child health, mental/behavioral health, cardiovascular health, and diabetes prevention are guided by training in public health, social epidemiology, social marketing, community-based participatory research, and evaluation.

**Stanley Atkins, II**

Chief Executive Officer
The Stanley Group

Stanley Atkins II is currently the CEO of The Stanley Group LLC, a business consulting agency based in Metro Atlanta. While battling a long-term illness, he was able to transition his knowledge in healthcare into public health information and advocacy. In 2016 Stanley created "The CanniMedic", a platform created to bridge the gap between traditional healthcare practices, and alternative wellness therapies. The CanniMedic was founded with a key focus on cannabis and healthcare. Stanley has positioned himself as a formidable figure in local and state level politics. Stanley has assisted in on multiple cannabis legislative bills including HB-1, HB- 65, HB-324 and HB-213. Through his advocacy work Stanley has successfully assisted with the Cannabis decriminalization ordinances of the cities of Atlanta, Macon, as well as the City of South Fulton, Georgia.

**Vincent C. Bond, PhD**

Professor and Chair of Microbiology, Biochemistry, and Immunology
Morehouse School of Medicine

Dr. Vincent Bond is Professor and Chair, Microbiology, Biochemistry and Immunology, Principal Investigator, MSM RCMI U54 CTRHD. He is also Interim Director of the developing MSM Natural Products Research Center (NPRC) where we support an HIV team uncovering a potential plant-based HIV therapy, and the fast-growing MSM multidisciplinary cannabis and endocannabinoid team.

Craig received his PhD at The Pennsylvania State University and completed postdoc training at the California Institute of Technology. His subsequent research career at MSM involves studying HIV/human host interactions and role in host progression to AIDS. His work has led to new therapeutic targets and therapies to slow or stop AIDS, holding 8 patents.

**The Honorable Buddy Carter**

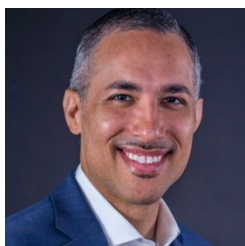
U.S. Congressman, 1st District of Georgia

Representative Carter is an experienced businessman, health care professional and faithful public servant. As the owner of Carter's Pharmacy, Inc., South Georgians have trusted Buddy with their most valuable assets: their health, lives and families for more than thirty years. While running his business, he learned how to balance a budget and create jobs. He also saw firsthand the devastating impacts of government overregulation which drives his commitment to ensuring that the federal government creates policies to empower business instead of increasing burdens on America's job creators. As the only pharmacist serving in Congress, Buddy is the co-chair of the Community Pharmacy Caucus and is dedicated to working towards a health care system that provides more choices, less costs and better services.

**Ziva Cooper, PhD**

Research Director
Cannabis Research Initiative
University of California at Los Angeles

Dr. Ziva Cooper is the Director of the UCLA Cannabis Research Initiative in the Jane and Terry Semel Institute for Neuroscience and Human Behavior and Associate Professor in the Department of Psychiatry. Her research involves understanding variables that influence both the therapeutic potential and adverse effects of cannabis and cannabinoids. Dr. Cooper received her PhD from the University of Michigan in Biopsychology in 2007 in the field of preclinical psychopharmacology, experience that informs her focus on translating preclinical studies of cannabinoids to the clinic using placebo-controlled human drug-administration studies. Current projects include understanding the potential for cannabis constituents to reduce reliance on opioids, differences between men and women in their response to the pain-relieving effects of cannabis, and therapeutic effects of cannabinoids in patient populations. Dr. Cooper served on the National Academies of Sciences Committee on the Health Effects of Cannabis that recently published a comprehensive report of the health effects of cannabis and cannabinoids. She is a Board Director for the College on Problems of Drug Dependence, an Associate Editor of The American Journal of Drug and Alcohol Abuse, and is on several Editorial Boards of journals including Cannabis and Cannabinoid Research and Neuropsychopharmacology.

**Daniel E. Dawes, JD**

Executive Director
Satcher Health Leadership Institute
Morehouse School of Medicine

Daniel E. Dawes, J.D., a widely respected scholar, researcher, educator, and leader in the health equity, health reform, and mental health movements, is director of the Satcher Health Leadership Institute at Morehouse School of Medicine in Atlanta, Georgia and a professor of health law, policy and management. He is also the co-founder of the Health Equity Leadership and Exchange Network (HELEN), which is a nationwide network of over 2000 governmental and non-governmental leaders, researchers, and scholars focused on bolstering leadership and the exchange of research, information, and solutions to advance evidence-based health equity-focused policies and programs.

Dawes's research focuses on the determinants or drivers of health inequities among under-resourced, vulnerable, and marginalized communities and is the pioneer of a new approach to examining inequities, the political determinants of health. He brings a forward-thinking, inclusive, and multidisciplinary approach to health policy, authoring two groundbreaking books, *150 Years of ObamaCare* and *The Political Determinants of Health*, published by Johns Hopkins University Press, which have received critical acclaim and rave reviews.

**Dasheeda Dawson, MBA**

Chief Strategist
Cannabis Health Equity Movement

Dasheeda Dawson is co-founder and Chief Strategist for the Cannabis Health Equity Movement (CHEM) and author of the bestselling workbook, *How to Succeed in the Cannabis Industry*. A global cannabis educator featured across multiple media outlets, Dasheeda is a corporate-to-cannabis crossover pioneer and award-winning business strategist with experience as a senior executive leader and strategy expert for multiple cannabis businesses, municipalities and media outlets across the country. She is a co-host on *She Blaze*, a weekly cannabis culture and news podcast. She serves on the Doctors for Cannabis Regulation Board of Directors and is a founding member of Cannabis Regulators of Color Coalition.

**Nelson J. Dunlap, JD**

Public Policy Manager
Satcher Health Leadership Institute
Morehouse School of Medicine

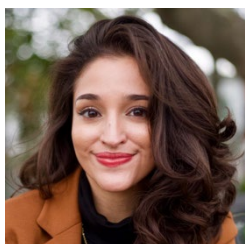
Nelson J. Dunlap was born and raised in Austin, Texas and is a relatively recent transplant to the city of Atlanta, Georgia where he currently serves as the Chief-of-Staff for the Satcher Health Leadership Institute at Morehouse School of Medicine as well as a Senior Advisor for the Health Equity Leadership and Exchange Network (HELEN). Mr. Dunlap graduated from Texas Tech University with a Bachelor of Arts in Political Science and a minor in Legal Studies in December of 2011. He received his Juris Doctor from DePaul University College of Law in May of 2015.

**Timothy W. Fong, MD**

Clinical Professor
Cannabis Research Initiative
University of California at Los Angeles

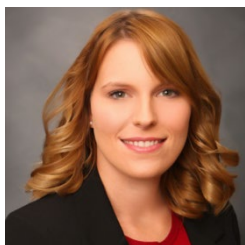
Dr. Fong is a Professor of Psychiatry at the Semel Institute for Neuroscience and Human Behavior at UCLA and he is board certified in adult and addiction psychiatry. He is the director of the UCLA Addiction Psychiatry Fellowship, a one-year program that provides clinical training in the management of addictive disorders.

He is also the co-director of the UCLA Gambling Studies Program. The purpose of this program is to examine the underlying causes and clinical characteristics of gambling disorder in order to develop effective, evidence-based treatment strategies.

**Jessica F. Gonzalez, JD**

Outside General Counsel
Minorities for Medical Marijuana

Jessica currently serves as a Cannabis and Intellectual Property attorney at Bressler Amery & Ross, as well as outside General Counsel for the national organization Minorities for Medical Marijuana. Jessica also sits on the state and federal Policy Committee for the national organization Minority Cannabis Business Association. Jessica was recently named one of NJ's top 20 Cannabis Influencers for her work advocating for social justice and social equity for the minority community. As a cannabis attorney, Jessica assists cannabis clients navigate the legal cannabis and hemp industry in the areas of corporate, intellectual property and state licensing applications. As a sought-after speaker and contributor, Jessica has presented on both the municipal and state level on topics such as social justice/social equity, IP protection, cannabis legislation and state cannabis licensing. Jessica is also an alum of New Jersey New Leaders Council, a national organization that selects civically engaged leaders in their respective industry. Most recently, Jessica was a member of the NJ CAN 2020 coalition that ran the most successful campaign for cannabis legalization in NJ.

**Sara K. Houston, JD**

Lead Public Health Attorney
Nebraska Department of Health and Human Services

Sara Houston is the Lead Public Health Attorney for the State of Nebraska. Ms. Houston holds a Juris Doctor from the University of Nebraska College of Law with a concentration in health care and elder law. Prior to her position with the state, she was a professor and Director of the Law, Politics and Society Program at Doane University, where among other courses, she taught health law and ethics. She has worked as a litigator in the areas of professional negligence, personal injury and product liability, and is trained as a Critical Care Flight Paramedic.

**Rachel Knox, MD, MBA**

Co-Founder & Chair, Association for Cannabis Health Equity and Medicine (ACHEM)
Co-Founder & President, CHEM

Dr. Rachel Knox, MD, MBA is a certified Cannabinoid Medicine specialist and Clinical Endocannabinologist with a background in Family, Integrative, and Functional Medicine. Along with her family she founded Doctors Knox, Inc., American Cannabinoid Clinics, and Pivotal Edu. Dr. Knox is a policy and regulatory consultant on cannabis health equity and the broader way cannabis can impact the wellbeing of communities of color through health equity. She is Chair of Oregon Cannabis Commission, member of Portland's Cannabis Policy Oversight Team, Board Member for Doctors for Cannabis Regulation and Minority Cannabis Business Association, Advisory Board Member of the American Academy of Cannabinoid Medicine, Co-founder and President of the Cannabis Health Equity Movement, Founder and Chair of Association for Cannabis Health Equity and Medicine, and Board Member for Nuleaf Project PDX.

**The Honorable Barbara Lee**U.S. Congresswoman, 13th District of California

In 1998, Congresswoman Barbara Lee was elected to serve California's 9th congressional district (now the 13th) in a special election. She is the only African American woman in Democratic Leadership, serving as Co-Chair of the Policy and Steering Committee. As Co-Chair, Rep. Lee works to ensure that committees reflect the diversity, dynamism, and integrity of the Democratic Caucus. She also works to advance the policies that comprise the Democratic "For the People" agenda. In addition, she currently serves as the Chair of the Majority Leader's Task Force on Poverty and Opportunity, Co-Chair of the Pro-Choice Caucus, and Co-Chair of the Cannabis Caucus. She is the former chair of the Congressional Black Caucus (111th Congress) and co-chair of the Congressional Progressive Caucus (109th & 110th Congresses).

**James Lillard, PhD, MBA**

Associate Dean for Research

Professor

Morehouse School of Medicine

Dr. Lillard was the Smith & Lucille Gibson Endowed Chair in Medicine, Senior Scientist at the James Graham Brown Cancer Center, and Vice Chair for Research & Professor in the Department of Microbiology & Immunology at the University of Louisville from 2006 to 2009. Dr. Lillard rejoined MSM's faculty as Professor of Microbiology, Biochemistry, & Immunology and Assistant Dean for Research in November 2009. In July 2011, Dr. Lillard established the Office of Translational Technologies at MSM, where he serves as its Director. In January 2019, he helped launch the online MS in Biotechnology Program at MSM, which is ranked #6 out of 155 similar programs. Dr. Lillard also serves as the Director of the Georgia Research Alliance Ventures Program, and the Associate Dean for Research Affairs at Morehouse School of Medicine. He has directly helped establish preclinical and clinical stage biotech companies and indirectly contributed to the formation and commercialization plans of others, as both a scientific and strategic business advisor.

**Chanda Macias, PhD, MBA**

Chief Executive Officer

Ilera Holistic Healthcare

Dr. Chanda Macias, MBA, PhD, is a healthcare professional and leader in the cannabis industry who has pioneered social equity and justice reform efforts in the industry and in partnership with HBCUs. She is CEO of Ilera Holistic Healthcare, the medical marijuana cultivator and processor for the State of Louisiana. In addition to cultivating and processing medical marijuana, Dr. Macias dispenses it through the leading medical marijuana dispensary in Washington DC, National Holistic™ Healing Center (NHHHC). Under her leadership, NHHHC has majority market share in Washington, D.C., significant patient retention, and has increased patient enrollment through her educational platform.

**Joel McElhannon**

Political Strategist

South Public Affairs Consulting, LLC

Spanning a career of over 25 years, Joel McElhannon offers his clients a wealth of experience in public affairs communication, advertising, business development and strategic planning. He has long standing relationships with state leaders from every corner of our state and utilizes that unique insight to help build bridges between state leaders and vital Georgia institutions such as the Morehouse School of Medicine.

Joel recently joined the Morehouse SoM team as a consultant helping to develop strategic partnerships with companies seeking a medical cannabis license in Georgia. It is his hope that these partnerships will help advance the health care equity mission of the school by funding new scholarships and cutting-edge research.

**Valerie Montgomery Rice, MD**

President and Dean
Morehouse School of Medicine

Dr. Valerie Montgomery Rice, president and dean of Morehouse School of Medicine, is the sixth president of Morehouse School of Medicine (MSM) and the first woman to lead the institution. A renowned infertility specialist and researcher, she is dedicated to the creation and advancement of health equity and lends her vast experience and talents to initiatives that enhance pipeline opportunities for academically diverse learners, diversifies the physician and scientific workforce, and fosters equity in health care access and health outcomes.

**Mary Pryor**

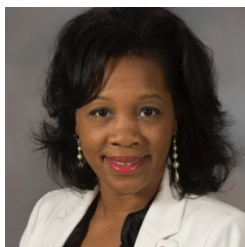
Co-Founder
Cannaclusive

She is the co-founder of Cannaclusive, a collective focused on inclusive marketing and business advocacy in the cannabis industry, New York Chapter President of Minorities for Medical Marijuana, and she serves as Chief Marketing Officer for Tonic CBD and Tricola Farms. She currently serves on the board for Possible Plan, a Cura Cannabis social equity effort and serves as an advisor and judge for Eaze Momentum Accelerator. She advises three cannabis and non-plant-touching companies: Kanna, Dieux Skin, Flor De Maria Chocolates. She is a proud native Detroit and graduate of the University of Michigan.

**Maisha Standifer, PhD, MPH**

Director, Health Policy
Satcher Health Leadership Institute
Morehouse School of Medicine

Dr. Maisha N. Standifer is the Director of Health Policy in the Satcher Health Leadership Institute at Morehouse School of Medicine. In her role, Dr. Standifer conducts studies and administers evidence-based prevention initiatives that effectively employ targeted strategies to reduce negative health outcomes throughout under-resourced, racially and ethnically vulnerable populations. She brings her wealth of experience including health program administration, evaluation and research expertise, health policy development and analysis, mixed methods research and examining social and political determinants of health. Dr. Standifer is also an Assistant Professor, and a Co-Investigator on multiple federally funded studies. Her research portfolio furthers production in implementation and health services research, along with community-based participatory research to create culturally-tailored interventions which empowers disenfranchised populations to make healthy and informed decisions. Dr. Standifer received her Bachelor's degree at Spelman College, her Master's degree in Public Health from Rollins School of Public Health at Emory University, and a doctorate in Applied Anthropology with a concentration in Medical Anthropology from the University of South Florida.

**Juanyce D. Taylor, PhD**

Chief Diversity and Inclusion Officer
University of Mississippi Medical Center

Juanyce Taylor, PhD, is Chief Diversity and Inclusion Officer at the University of Mississippi Medical Center, and an associate professor in the Doctor of Health Administration Program in the School of Health Related Professions. Her areas of interest include diversity, inclusion, health equity, and access to education. Prior to UMMC, she led federally funded programs to increase diversity in STEM and biomedical fields at the University of Mississippi and Auburn University. Taylor is the recipient of numerous grants, honors, and awards. She received her BS and PhD from the University of Southern Mississippi and a MEd from Jackson State University.